



**2020  
PRODUCT  
OFFERING**



ZGO Solutions creates desk frames, control units, motors, and everything else you need to build a customizable and sustainable foundation for your desks and tables. Browse through our product collections and our many customization options to create the ideal fit for your office needs. ZGO Solutions is an international company with members from Europe, Asia, and the Americas. We draw inspiration from the timeless Scandinavian design principles of beauty, simplicity, and functionality while upholding the peaceful and harmonious elements of the Chinese culture.

WELCOME

OUR MISSION

**OUR VALUES:**  
 One World: Creating globally sustainable products  
 One Life: Adding balance and simplicity to every office  
 One Body: Developing products that improve health and wellness

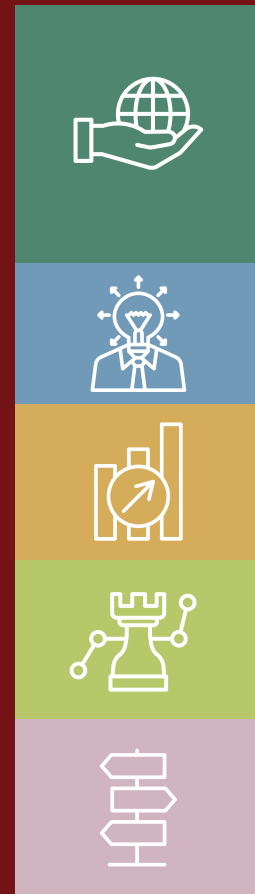
**One world. One life. One body.**

**WHAT'S INSIDE:**

1. **Who We Are: 4-5**
2. **Smart Systems: 6-15**
3. **Product Collections:**
  - **Zen: 18-29**
  - **Global: 30-35**
  - **Harbor: 36-41**
  - **Axis: 42-45**
  - **Upgrade: 46-49**
  - **Universal: 50-55**
  - **Empire: 56-60**
4. **Options & Accessories: 62-71**



# WHO WE ARE



## SHOWROOMS/OFFICES

China – Shaoxing-Shangyu  
China – Shanghai  
USA – Grand Rapids, Michigan  
Europe – Glostrup, Denmark

## PATENTS

25+ total patents

## CLIENTS

Selling in 10+ countries

## REMOTE OPERATIONS

Byron Center, Michigan, USA

## GLOBAL HQ & PRODUCTION CENTER

Shaoxing-Shangyu, China



# ALL <sup>CS</sup> NEW! *THE SMART SYSTEM*

## Redefining the Traditional Height Adjustable Table

Get Smart. An intelligent and innovative approach to height adjustable workspaces, the Smart System is a collection of components that provide uncompromising stability, simplified assembly, and unlimited design options. The Smart System provides 5x faster installation with less than half of the components and materials required for traditional installation methods.

5X FASTER INSTALLATION / SMART CONNECTIONS / CABLE MANAGEMENT / PRIVACY OPTIONS / ACCESS TO COLOR





# From sleek to colorful, the combinations are endless

FINISHING TOUCHES TO MAKE IT YOURS

### Smart Rim Finishes

SMART RIM FINISHES

|            |           |         |          |      |
|------------|-----------|---------|----------|------|
| Pure White | Tangerine | Crimson | Sky Blue | Jade |
|            |           |         |          | Gray |

When you customize your smart desk system, you can choose grounding colors or colors that excite the mind in any combination! Contact our team or visit our website to learn more about all the Smart System options.



### Smart Screen Finishes

|             |              |       |              |               |             |           |
|-------------|--------------|-------|--------------|---------------|-------------|-----------|
| Canary Gold | Burnt Orange | Ruby  | Merlot       | Maroon        | Blue Lagoon | Navy Blue |
| Silver      | Stone Gray   | Black | Thunder Gray | Midnight Blue | Red Coral   |           |

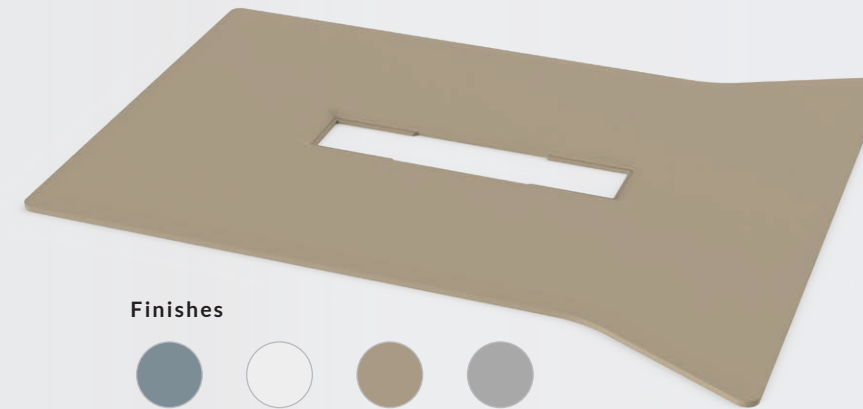
# Our table top offerings

FINISHING TOUCHES TO MAKE IT YOURS

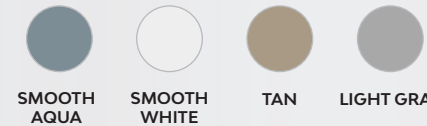


## Conference

Designed to support collaborative meeting spaces



Finishes



SMOOTH AQUA SMOOTH WHITE TAN LIGHT GRAY

## Adjustable Meeting Table

Designed to support collaborative meeting spaces



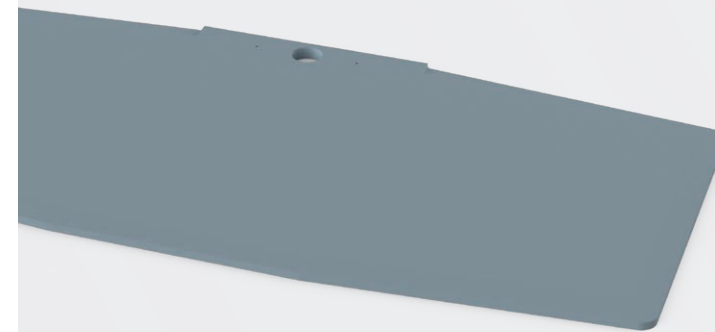
Finishes



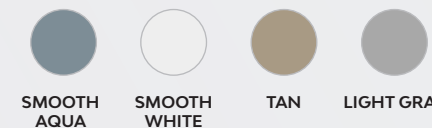
SMOOTH AQUA SMOOTH WHITE TAN LIGHT GRAY

## Freestanding

Designed to enable any individual workstyle



Finishes



SMOOTH AQUA SMOOTH WHITE TAN LIGHT GRAY

## Executive

An elegant, high-quality finish for your private office



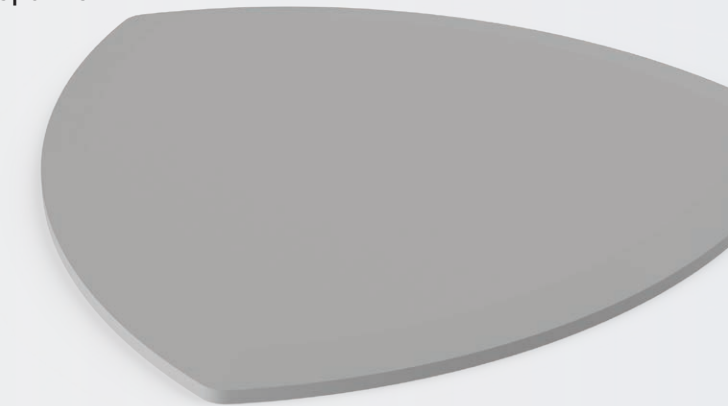
Finishes



WALNUT WHITE OAK

## Lounge

Designed to support collaborative meeting spaces



Finishes

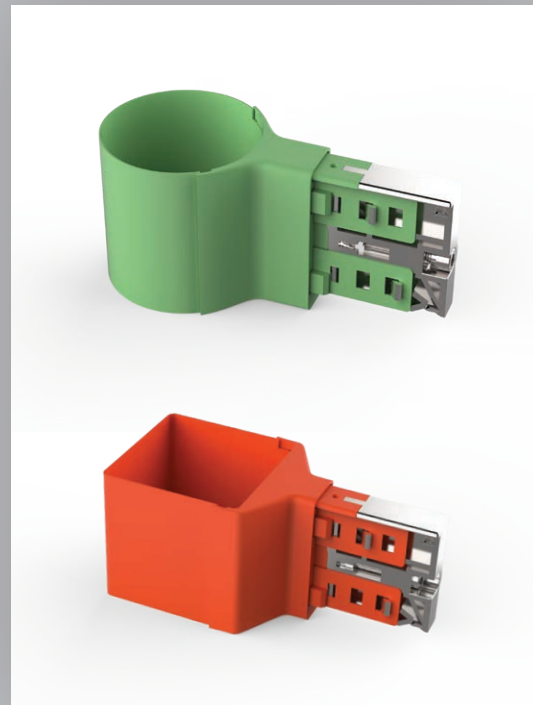


SMOOTH AQUA SMOOTH WHITE TAN LIGHT GRAY

## SMART SYSTEM OPTIONS

### Smart Rim

The central component to the Smart System. The Smart Rim is responsible for the connection of all Smart components and features a 2-screw installation process for faster installation and easy reconfigurations.



### Smart Beam

Working in tandem with the Smart Rim and the overall structure, the Smart Beam provides unparalleled stability and strength with minimal assembly.



### Smart Top Frame

With 5x faster installation than traditional construction, the Smart Connect system of our Smart Top Frame facilitates easy installation and easy reconfiguration with one simple step.



### Smart Cable Management

A cleaner way to hide cables without compromising the design of the desk. The scissor-shaped cord manager moves seamlessly as the user adjusts the desk. The top cable tray easily clicks into the table top, while providing the option for table top power.



### Smart Trim Options

Smart Trim adds an extra pop of color to your desk's feet or trim in any of our standard colors or in your own custom brand color. All of our Smart System components are available in the colors shown on page 8-9.

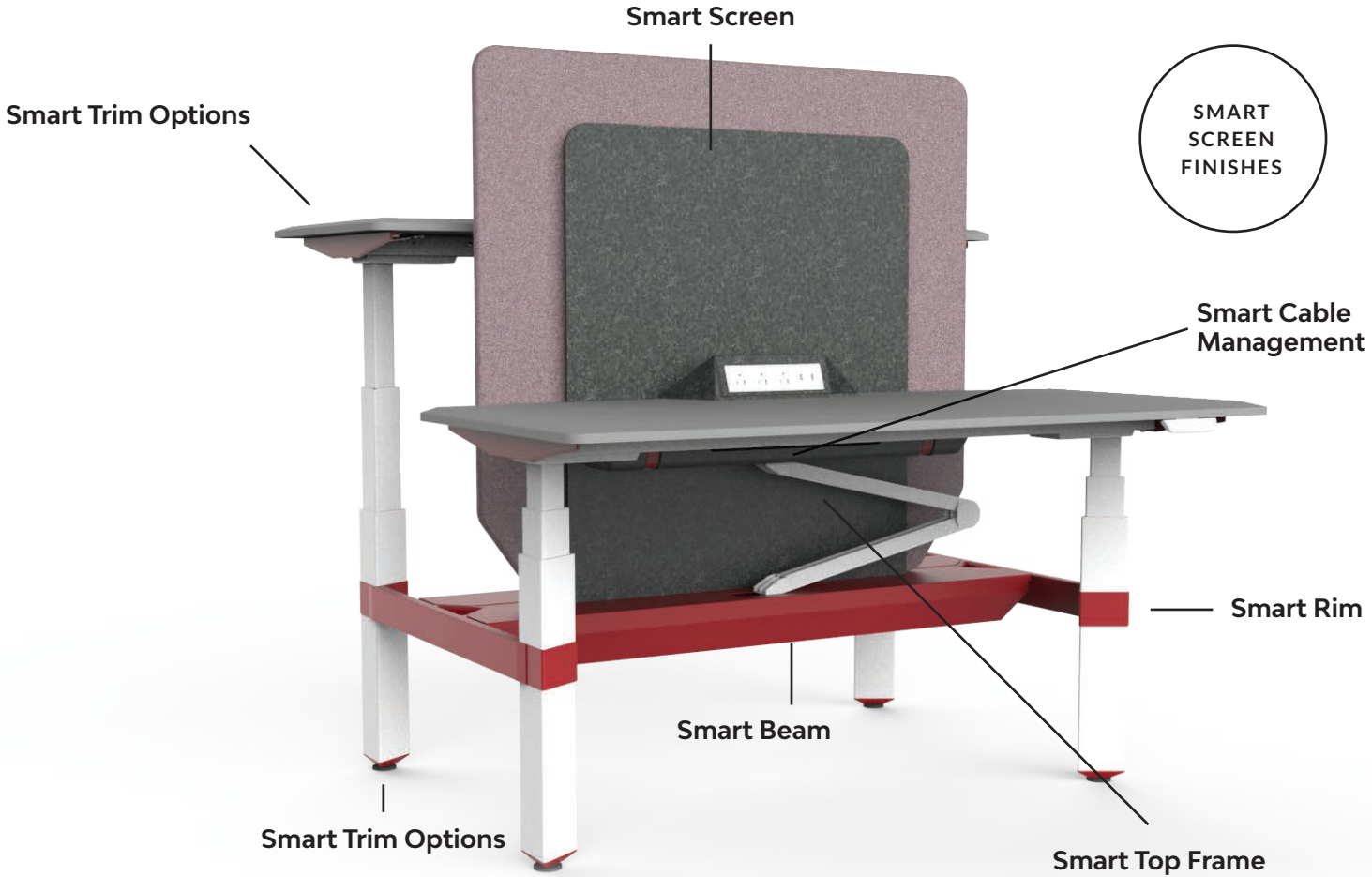


### Smart Screen





An innovative, uncomplicated connection from screen to beam. No secondary attachment required. All of our Smart Screen finishes are available in the colors shown on page 8-9.



# SMART SYSTEM OPTIONS



Available in the following product lines:

|           | SMART COMPONENTS   | TRADITIONAL |
|-----------|--|-------------|
| ZEN       |   |             |
| GLOBAL    |   | ✓           |
| HARBOR    |   | ✓           |
| AXIS      | <br><small>Excludes Smart Rim, Smart Beam, and Smart Screen</small> | ✓           |
| UPGRADE   |  | ✓           |
| UNIVERSAL |  | ✓           |
| EMPIRE    |  | ✓           |

**2020  
PRODUCT  
OFFERING**



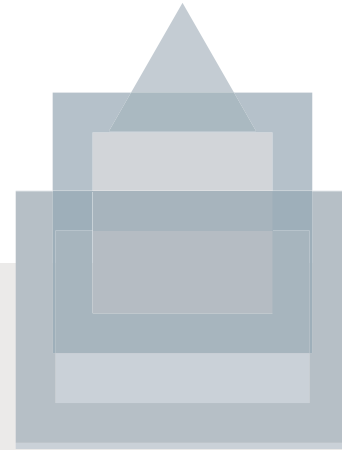
## Zen

Zen is a state of mind that evokes a sense of balance, simplicity, and inspiration. Derived from an isosceles triangle, the geometric form is designed as a new kind of workspace that reflects the importance of a healthy mind and body.



## Global

A simple, yet elegant desk system, add a global touch to your workspace with the circular leg design of our internationally inspired Global Collection.



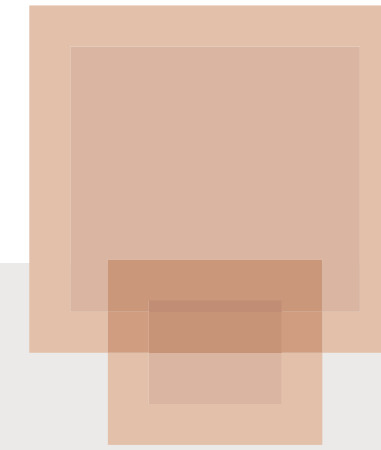
## Harbor

Introducing ZGO Solutions' most comprehensive and versatile height adjustable desk collection, Harbor was created to give you all the options in a proven, popular design.



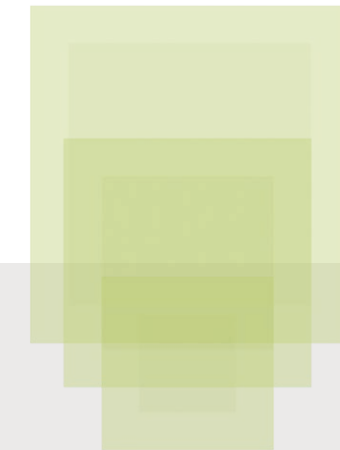
## Axis

A new-age height adjustable desk, Axis represents a refined, intelligent performing freestanding solution, all while protecting your bottom line.



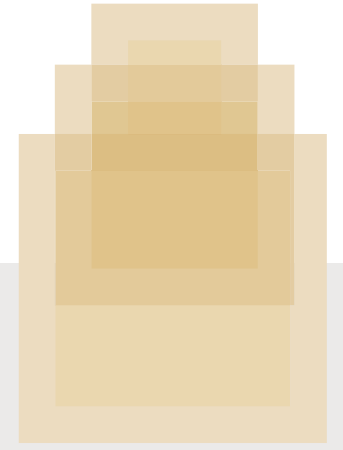
## Upgrade

Designed as a basic expression of a desk – the Upgrade Collection is responsive to settings across the entire office floorplate to create the most out of your environment.



## Universal

One for all and all for one – the Universal Collection was created to support the knowledge worker no matter the workstyle.



## Empire

The Empire Collection is a foundational member of the ZGO Solutions' portfolio, offering a classic and cost-effective option for a height adjustable table.

# Zen

COLLECTION

Complete collection on pages 28-29



Zen Executive Freestanding Desk



Now available to order with the Smart System. See pages 6-15 for more details.

Zen is a state of mind that evokes a sense of balance, simplicity, and inspiration. Derived from an isosceles triangle, the geometric form is designed as a new kind of workspace that reflects the importance of a healthy mind and body.

## ZEN FEATURES:

**Shared Design Logic:** An expansive family of products based on a consistent design language, from single-leg tables, to freestanding desks and benches, to executive and collaborative meeting tables. The Zen executive model is one of the few in the industry that provides a true executive solution while staying true to the design elements of the other Zen models.

**Intelligent Performance:** Designed with ZGO Solutions' highly innovative and scalable Smart System components – it allows for 5x faster installation, concealed plug and play power, Smart Screens, cable management, and more. Zen is also the only desk system with a self-cleaning function for electric legs.

**Triangular Legs :** Zen's unique triangular design offers the highest levels of stability and balance. With its triangular shape and support band, Zen provides the strongest connections of any of our products.



Many companies offer an executive desk solution. But Zen Executive is the only solution that combines that executive look and feel with adjustability in a design that matches your other desking solutions.

# Zen

FOR ALL EXECUTIVE,  
OFFICE, AND SOCIAL SPACES

The Zen executive desk, available in oak or walnut finish, is standard with an integrated casegood for expanded storage.



2020  
PRODUCT  
OFFERING

# Zen

FOR CONFERENCES & LOUNGES

Features and benefits:

- Triangular legs
- Fixed and adjustable height options



ZEN CONFERENCE: DESIGNED FOR TODAY'S DATA DRIVEN WORKFORCE.

With cable management options that are perfect for touchdown and meeting spaces.



ZEN LOUNGE:

TRIANGULAR LEG BASE WITH ENDLESS TOP  
OPTIONS TO FIT YOUR DESIGN.



2020  
PRODUCT  
OFFERING

# Zen

FOR SOCIAL SPACES & PERSONAL OFFICES



Zen Freestanding  
2 Leg Desk



## FIXED MEETING TABLE

Gather around this fixed height table to dream up your next great idea.



## ADJUSTABLE MEETING TABLE

Work surface moves with your team's needs and provides functional design.

# Support Group Interaction

The nature of work continues to change. No longer are people confined to their workstations. The modern office has evolved into a place of collaborative and social environments to better foster inspiration, connections, and productivity. Create purposeful work with our Zen Social Spaces Collection.



EXECUTIVE

ZEN / ELECTRIC / 2-L / 2-M

- Leg Stage: 3 Stage
- Speed: 36mm / 1.4" per second
- Stroke: 662mm / 26"
- Leg Size: 98x98x98mm / 3.88x3.88x3.88"
- Load Capacity: 120kg / 264lbs
- Height Range: Extended: 550-1212mm/21.7"-47.7" Standard: 625-1287mm / 24.6"-50.7"
- Leg Quantity: 2 Leg
- Operation: Electric



ELECTRIC

FREESTANDING / ELECTRIC / 2-L / 2-M

- Leg Stage: 3 Stage
- Speed: 36mm / 1.4" per second
- Stroke: 662mm / 26"
- Leg Size: 98x98x98mm / 3.88x3.88x3.88"
- Load Capacity: 120kg / 264lbs
- Height Range: Extended: 550-1212mm/21.7"-47.7" Standard: 625-1287mm / 24.6"-50.7"
- Leg Quantity: 2 Leg
- Operation: Electric



BACK-TO-BACK

ZEN / BACK-TO-BACK / 4-L / 4-M

- Leg Stage: 3 Stage
- Speed: 36mm / 1.4" per second
- Stroke: 662mm / 26"
- Leg Size: 98x98x98mm / 3.88x3.88x3.88"
- Load Capacity: 120kg / 264lbs each side
- Height Range: Extended: 550-1212mm / 21.7"-47.7" Standard: 625-1287mm / 24.6"-50.7"
- Leg Quantity: 4 Leg
- Operation: Electric



CONFERENCE

ZEN / FIXED / CONFERENCE / 4L

- Leg Stage: 1 Stage
- Leg Size: 98x98x98mm / 3.88x3.88x3.88"
- Load Capacity: 300kg / 662lbs
- Height Range: 1050mm / 41.3"
- Leg Quantity: 4 Leg
- Operation: Fixed



LOUNGE

ZEN / ADJUSTABLE BAR / 2L / 2-M

- Leg Stage: 3 Stage
- Speed: 36mm / 1.4" per second
- Stroke: 662mm/26"
- Leg Size: 98x98x98mm / 3.88x3.88x3.88"
- Load Capacity: 120kg / 264lbs
- Height Range: Extended: 550-1212mm/21.7-47.7" Standard: 625-1287mm / 24.6"-50.7"
- Leg Quantity: 2 Leg
- Operation: Electric



Also available as a fixed height model

ELECTRIC

FREESTANDING / ELECTRIC / 3-L / 3-M

- Leg Stage: 3 Stage
- Speed: 36mm / 1.4" per second
- Stroke: 662mm / 26"
- Leg Size: 98x98x98mm / 3.88x3.88x3.88"
- Load Capacity: 150kg / 331lbs
- Height Range: Extended: 550-1212mm/21.7"-47.7" Standard: 625-1287mm / 24.6"-50.7"
- Leg Quantity: 3 Leg
- Operation: Electric



BENCHING

ZEN / BENCHING / 8-L / 8-M

- Leg Stage: 3 Stage
- Speed: 36mm / 1.4" per second
- Stroke: 662mm / 26"
- Leg Size: 98x98x98mm / 3.88x3.88x3.88"
- Load Capacity: 120kg / 264lbs each side
- Height Range: Extended: 550-1212mm/21.7"-47.7" Standard: 625-1287mm / 24.6"-50.7"
- Leg Quantity: 4 Leg per unit
- Operation: Electric



LOUNGE

ZEN / 1-L

- Leg Stage: 1 Stage
- Leg Size: 98x98x98mm / 3.88x3.88x3.88"
- Load Capacity: 80kg/176lbs
- Operation: Fixed
- Height Range: 425/715/1025mm 16.7/28.1/40.4"
- Leg Quantity: 1 Leg



# Global

COLLECTION

Complete  
collection on  
pages 34-35



Now available  
to order with the Smart  
System. See pages 6-15  
for more details.

A simple, yet elegant desk  
system, add a global touch to  
your workspace with the circular  
leg design of our internationally  
inspired Global Collection.

THE GLOBAL COLLECTION IS AVAILABLE IN FREESTANDING, BACK TO BACK CONFIGURATIONS, AND MORE



Global Freestanding 2 Leg Desk

# Global

COLLECTION

2020  
PRODUCT  
OFFERING



Now available  
to order with the Smart  
System. See pages 6-15  
for more details.



TUBULAR  
LEG  
DESIGN

### Round Telescoping Leg

A tubular leg design that provides a timeless aesthetic for any workspace.



Global Freestanding 2 Leg Desk

### Intelligent Performance

Designed and engineered with ZGO Solutions' Smart System components, the Global Collection is comprised of smart elements to foster collaboration or heads-down focus work.

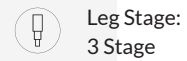
### Effortless Combinations

This robust system enhances workspaces using freestanding models in a 2 or 3 leg design, back-to-back, and benching applications – available in both standard and custom color finishes.

# Global COLLECTION

## ELECTRIC

### FREESTANDING / ELECTRIC / 2-L / 2-M



Leg Stage:  
3 Stage



Speed:  
36mm / 1.4" per second



Stroke:  
662mm / 26"



Leg Size:  
70x70mm / 2.75x2.75"



Load Capacity:  
120kg / 264lbs



Height Range:  
Extended: 550-1212mm/21.7'-47.7"  
Standard: 625-1287mm / 24.6"-50.7"



Leg Quantity:  
2 Leg

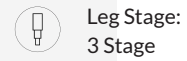


Operation:  
Electric



## ELECTRIC

### FREESTANDING / ELECTRIC / 3-L / 3-M



Leg Stage:  
3 Stage



Speed:  
36mm / 1.4" per second



Stroke:  
662mm / 26"



Leg Size:  
70x70mm / 2.75x2.75"



Load Capacity:  
150kg/331 lbs



Height Range:  
Extended: 550-1212mm/21.7'-47.7"  
Standard: 625-1287mm / 24.6"-50.7"



Leg Quantity:  
3 Leg



Operation:  
Electric



## BACK-TO BACK

### BACK-TO-BACK / ELECTRIC / 4-L / 4-M



Leg Stage:  
3 Stage



Speed:  
36mm / 1.4" per second



Stroke:  
662mm / 26"



Leg Size:  
70x70mm / 2.75x2.75"



Load Capacity:  
120kg / 264lbs each side



Height Range:  
Extended: 550-1212mm/21.7'-47.7"  
Standard: 625-1287mm / 24.6"-50.7"



Leg Quantity:  
4 Leg



Operation:  
Electric



## BENCHING

### BENCHING / ELECTRIC / 8-L / 8-M



Leg Stage:  
3 Stage



Speed:  
36mm / 1.4" per second



Stroke:  
662mm / 26"



Leg Size:  
70x70mm / 2.75x2.75"



Load Capacity:  
120kg / 264lbs each side



Height Range:  
Extended: 550-1212mm/21.7'-47.7"  
Standard: 625-1287mm / 24.6"-50.7"



Leg Quantity:  
4 Leg each group



Operation:  
Electric



# Harbor

COLLECTION



Now available  
to order with the Smart  
System. See pages 6-15  
for more details.

Introducing ZGO Solutions' most  
comprehensive and versatile height  
adjustable desk collection, Harbor was  
created to give you all the options in a  
proven, popular design.

**Complete collection on pages 40-41**

THE HARBOR COLLECTION GIVES YOU ALL THE OPTIONS IN A PROVEN, POPULAR DESIGN.



Harbor Benching Workstations

# Harbor

COLLECTION

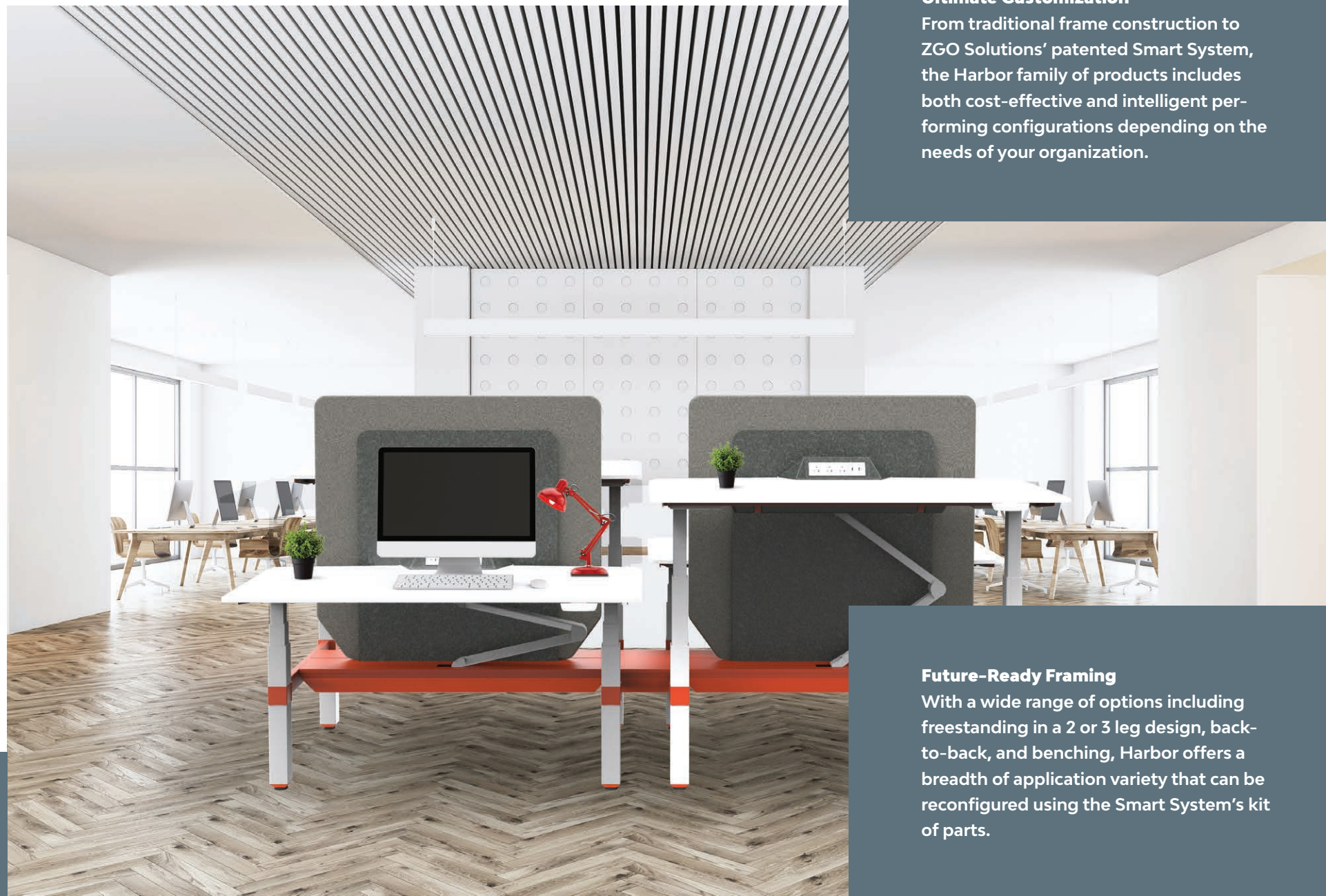
2020  
PRODUCT  
OFFERING



SQUARE  
SHAPED  
FRAME

### Ergonomic Choice

Compatible with ZGO Solutions' UL-approved control unit and motor, this square-shaped frame option provides high stability for a variety of applications, BIFMA G1 and EN 527 compliant height ranges, and low noise for optimal user-experience.



### Ultimate Customization

From traditional frame construction to ZGO Solutions' patented Smart System, the Harbor family of products includes both cost-effective and intelligent performing configurations depending on the needs of your organization.

### Future-Ready Framing

With a wide range of options including freestanding in a 2 or 3 leg design, back-to-back, and benching, Harbor offers a breadth of application variety that can be reconfigured using the Smart System's kit of parts.

# Harbor

COLLECTION



Now available to order with the Smart System. See pages 6-15 for more details.

## ELECTRIC

### FREESTANDING / ELECTRIC / 2-L / 2-M

Leg Stage:  
3 Stage

Height Range:  
Extended: 550-1212mm/21.7"-47.7"  
Standard: 625-1287mm / 24.6"-50.7"

Leg Quantity:  
2 Leg

Speed:  
36mm / 1.4" per second

Operation:  
Electric

Stroke:  
662mm / 26"

Leg Size:  
70x70mm/2.75x2.75"  
80x50mm/3.15x1.97"

Load Capacity:  
120kg / 264lbs



## ELECTRIC

### FREESTANDING / ELECTRIC / 3-L / 3-M

Leg Stage:  
3 Stage

Height Range:  
Extended: 550-1212mm/21.7-47.7"  
Standard: 625-1287mm / 24.6"-50.7"

Leg Quantity:  
3 Leg

Speed:  
36mm / 1.4" per second

Operation:  
Electric

Stroke:  
660mm / 26"

Leg Size:  
70x70mm/2.75x2.75"  
80x50mm/3.15x1.97"

Load Capacity:  
150kg / 331lbs



## BACK-TO-BACK

### BACK-TO-BACK / ELECTRIC / 4-L / 4-M

Leg Stage:  
3 Stage

Height Range:  
Extended: 550-1212mm/21.7-47.7"  
Standard: 625-1287mm / 24.6"-50.7"

Leg Quantity:  
4 Leg

Operation:  
Electric

Speed:  
36mm / 1.4" per second

Stroke:  
662mm / 26"

Leg Size:  
70x70mm / 2.75x2.75"  
80x50mm/3.15x1.97

Load Capacity:  
120kg / 264lbs each side



## BENCHING

### BENCHING / ELECTRIC / 8-L / 8-M

Leg Stage:  
3 Stage

Height Range:  
Extended: 550-1212mm/21.7"-47.7"  
Standard: 625-1287mm / 24.6"-50.7"

Leg Quantity:  
4 Leg each group

Operation:  
Electric

Speed:  
36mm / 1.4" per second

Stroke:  
662mm / 26"

Leg Size:  
70x70mm / 2.75x2.75"  
80x50mm/3.15x1.97"

Load Capacity:  
120kg / 264lbs each side



# Axis

COLLECTION

Complete collection on  
page 45



Now available  
to order with the Smart  
System. See pages 6-15  
for more details.

A new-age height adjustable  
desk, Axis represents a  
refined, intelligent performing  
freestanding solution, all while  
protecting your bottom line.



Axis Freestanding 2 Leg Desk

2020  
PRODUCT  
OFFERING

# Axis

COLLECTION



Axis Freestanding 2 Leg Desk

CLEAN  
DESIGN

**Refined Detail**

Inverted, telescoping columns deliver a stable, clean design from top to bottom.

**BIFMA G1 Compliant**

The inverted, telescoping columns feature BIFMA G1 and EN 527 compliant height ranges for 2 or 3 leg design as well as ZGO Solutions' UL-approved control unit and motor.

**ELECTRIC**

**FREESTANDING / ELECTRIC / 2-L / 2-M**

Leg Stage:  
3 Stage

Height Range:  
Extended: 550-1212mm/21.7"-47.7"  
Standard: 625-1287mm / 24.6"-50.7"

Leg Quantity:  
2 Leg

Speed:  
36mm / 1.4" per second

Operation: Electric

Stroke:  
662mm / 26"

Leg Size:  
70x70mm/2.75"x2.75"  
80x50mm/3.15"x1.97"

Load Capacity:  
120kg / 264lbs



**ELECTRIC**

**FREESTANDING / ELECTRIC / 3-L / 3-M**

Leg Stage:  
3 Stage

Height Range:  
Extended: 550-1212mm/21.7"-47.7"  
Standard: 625-1287mm / 24.6"-50.7"

Leg Quantity:  
3 Leg

Speed:  
36mm / 1.4" per second

Operation: Electric

Stroke:  
662mm / 26"

Leg Size:  
70x70mm/2.75x2.75"  
80x50mm/3.15x1.97"

Load Capacity:  
150kg / 331lbs



2020 PRODUCT OFFERING

**Brand Expression**

Sharing the same leg design as our popular Universal Collection, Axis also features accented feet and end pipe colors, integrated single-source power, and quick assembly using our patented Smart System components.

WWW.ZGOSOLUTIONS.COM

# Upgrade

Complete  
collection on  
page 48

Designed as a basic expression of  
a desk – the Upgrade Collection is  
responsive to settings across the  
entire office floorplate to create the  
most out of your environment.



Upgrade Work Desk



Upgrade Work Desk

# Upgrade

2020  
PRODUCT  
OFFERING

Max length as long  
as 2200mm/86.6"

Upgrade Conference



### Value Added

A cost-effective alternative to traditional fixed conference room tables, Upgrade shares the benefits of a fixed table – elegance, scalability in size, and increased leg space – but as an ergonomic solution.

### Spatial Efficiency

A product solution created with long top frames to meet any requirements for large tables (1.6 x 0.8m, 1.8 x 0.8m, and 2.0 x 0.8m). The Upgrade Collection has solutions for spacious personal-sized desks and conference tables.

### WORK & CONFERENCE / ELECTRIC



Leg Stage:  
2 Stage



Height Range:  
660 -1160mm /  
26"- 45.7"



Speed:  
36mm / 1.4" per second



Load Capacity:  
100kg / 220lbs



Stroke:  
500mm / 19.7"



Leg Size:  
70x50mm /  
2.75x1.97"



Operations: Electric



Leg Quantity: 4

### 4-legged Freestanding

Like a traditional 2-legged freestanding system, Upgrade only uses 2 motors – keeping costs low while adding an additional level of stability.



Upgrade Work

# Universal

COLLECTION

Complete  
collection on  
page 54-55

One for all and all for one - the  
Universal Collection was created to  
support the knowledge worker no  
matter the workstyle.



# Universal

2020  
PRODUCT  
OFFERING



Universal Freestanding 2 Leg Desk

#### Different Column Widths

- o 80x60mm / 3.15x2.36"
- o 80x80mm / 3.15x3.15"
- o 110x60mm / 4.33x2.36"

#### Refined Detail

Inverted, telescoping columns deliver a stable, clean design from top to bottom.



Universal Freestanding 3 Leg Desk

#### Design Freedom

Up to three different leg dimensions available for a variety of aesthetic options.

#### Unmatched Stability

Nicknamed "The Tank", the Universal Collection's dynamic weight capacity supports up to 150kg (331 lbs) – best in class performance.

# Universal

## ELECTRIC

### FREESTANDING / ELECTRIC / 2-L / 2-M



Leg Stage:  
3 Stage



Load Capacity:  
120kg / 264lbs



Leg Quantity: 2



Speed:  
36mm / 1.4" per second



Height Range:  
625-1275mm / 24.6"-50.2"



Stroke:  
650mm / 25.6"



Leg Size :  
80x60 mm / 3.15x2.36"  
80x80mm / 3.15x3.15"  
110x60mm / 4.33x2.36"



Operations: Electric



## CRANK

### FREESTANDING / CRANK / 2-L



Leg Stage:  
2 Stage



Height Range:  
630-1080mm /  
24.8"-42.5"



Leg Quantity: 2



Speed:  
12mm/.50" per turn



Operations:  
Crank



Stroke:  
450mm / 17.7"



Leg Size:  
70x50mm / 2.75x1.97"  
70x70mm / 2.75x2.75"  
100x50mm / 3.94x1.97"



Load Capacity:  
Capacity Dynamic: 50kg / 110lbs  
Capacity Static: 100kg / 220lbs



## PIN

### FREESTANDING / PIN



Leg Stage:  
2 Stage



Height Range:  
630-830mm /  
24.8"-32.7"



Leg Quantity: 2



Increment:  
20mm / 0.79"



Operations: Pin



Stroke:  
200mm / 7.9"



Leg Size:  
70x50mm / 2.75x1.97"  
70x70mm / 2.75x2.75"  
100x50mm / 3.94x1.97"



Load Capacity:  
100kg / 220lbs



## ELECTRIC

### FREESTANDING / ELECTRIC / 3-L / 3-M



Leg Stage:  
3 Stage



Height Range:  
625-1275 mm /  
24.6"-50.2"



Operations:  
Electric



Leg Quantity: 3



Speed:  
36mm / 1.4" per second



Stroke:  
650mm / 25.6"



Leg Size:  
80x60 mm / 3.15x2.36"  
80x80mm / 3.15x3.15"  
110x60mm / 4.33x2.36"



Load Capacity:  
150kg / 331lbs



## CRANK

### FREESTANDING / CRANK / 3-L



Leg Stage:  
2 Stage



Height Range:  
630-1080mm /  
24.8"-42.5"



Leg Quantity: 3



Speed:  
4mm/.16" per turn



Operations:  
Crank



Stroke:  
450mm / 17.7"



Leg Size:  
70x50mm / 2.75x1.97"  
70x70mm / 2.75x2.75"  
100x50mm / 3.94x1.97"



Load Capacity:  
Capacity Dynamic: 50kg / 110lbs  
Capacity Static: 100kg / 220lbs



## FIXED

### FREESTANDING / FIXED



Leg Stage:  
1 Stage



Height Range:  
700mm / 27.6"



Leg Quantity: 2



Leg Size:  
70x50mm/2.75x1.97"  
70x70mm / 2.75 x 2.75"  
100x50mm / 3.94x1.97"



Load Capacity:  
150kg / 331lbs



Operations: Fixed



# Empire

COLLECTION

**Complete  
collection on  
pages 60**

The Empire Collection is a foundational member of the ZGO Solutions' portfolio, offering a classic and cost-effective option for a height adjustable table.



Empire Freestanding 2 Leg Desk

# Empire

COLLECTION

2020  
PRODUCT  
OFFERING



Empire Freestanding  
2 Leg Crank Desk

Empire Freestanding  
2 Leg Pin Desk



#### Classic Solution

The classic square-legged design is available in any of ZGO Solutions' standard finishes, to fit any user preference.

#### Cost-Effective

The Empire collection maintains all the functionality of a height adjustable table in the most economical way possible.



#### Proven System

The Empire frame provides ultimate entry level performance in either a crank or pin option, as well as a fixed solution.

# Empire

## PIN

### FREESTANDING / PIN / 2-L

- Leg Stage: 2 Stage
- Height Range: 630-830mm / 24.8"-32.7"
- Operations: Pin
- Increment: 20mm / 0.79"
- Leg Quantity: 2
- Stroke: 200mm / 7.9"
- Leg Size: 70x70mm / 2.75x2.75"
- Load Capacity: 100kg / 220lbs



## CRANK

### FREESTANDING / CRANK / 2-L

- Leg Stage: 2 Stage
- Height Range: 630-1080mm / 24.8"-42.5"
- Operations: Crank
- Speed: 12mm/5" per turn
- Leg Quantity: 2
- Stroke: 450mm / 17.7"
- Leg Size: 70x70mm / 2.75x2.75"
- Load Capacity: Capacity Dynamic: 50kg / 110lbs  
Capacity Static: 100kg / 220lbs



## FIXED

### FREESTANDING / FIXED / 2-L

- Leg Stage: 1 Stage
- Height Range: 700mm / 27.6"
- Operations: Fixed
- Leg Size: 70x70mm / 2.75x2.75"
- Load Capacity: 150kg / 331lbs
- Leg Quantity: 2



# From sleek to colorful, the combinations are endless

## FINISHING TOUCHES TO MAKE IT YOURS

|              | ZEN | GLOBAL | HARBOR | AXIS | UPGRADE | UNIVERSAL | EMPIRE |
|--------------|-----|--------|--------|------|---------|-----------|--------|
| SMART SYSTEM | X   | X      | X      | X    |         |           |        |
| ELECTRIC     | X   | X      | X      | X    | X       | X         |        |
| CRANK        |     |        |        |      |         | X         | X      |
| FIXED        | X   |        |        |      |         | X         | X      |
| PIN          |     |        |        |      |         | X         | X      |
| 2 LEG        | X   | X      | X      | X    |         | X         | X      |
| 3 LEG        | X   | X      | X      | X    |         | X         |        |
| 4 LEG        |     |        |        |      | X       |           |        |
| BACK-TO-BACK | X   | X      | X      |      |         |           |        |
| BENCHING     | X   | X      | X      |      |         |           |        |

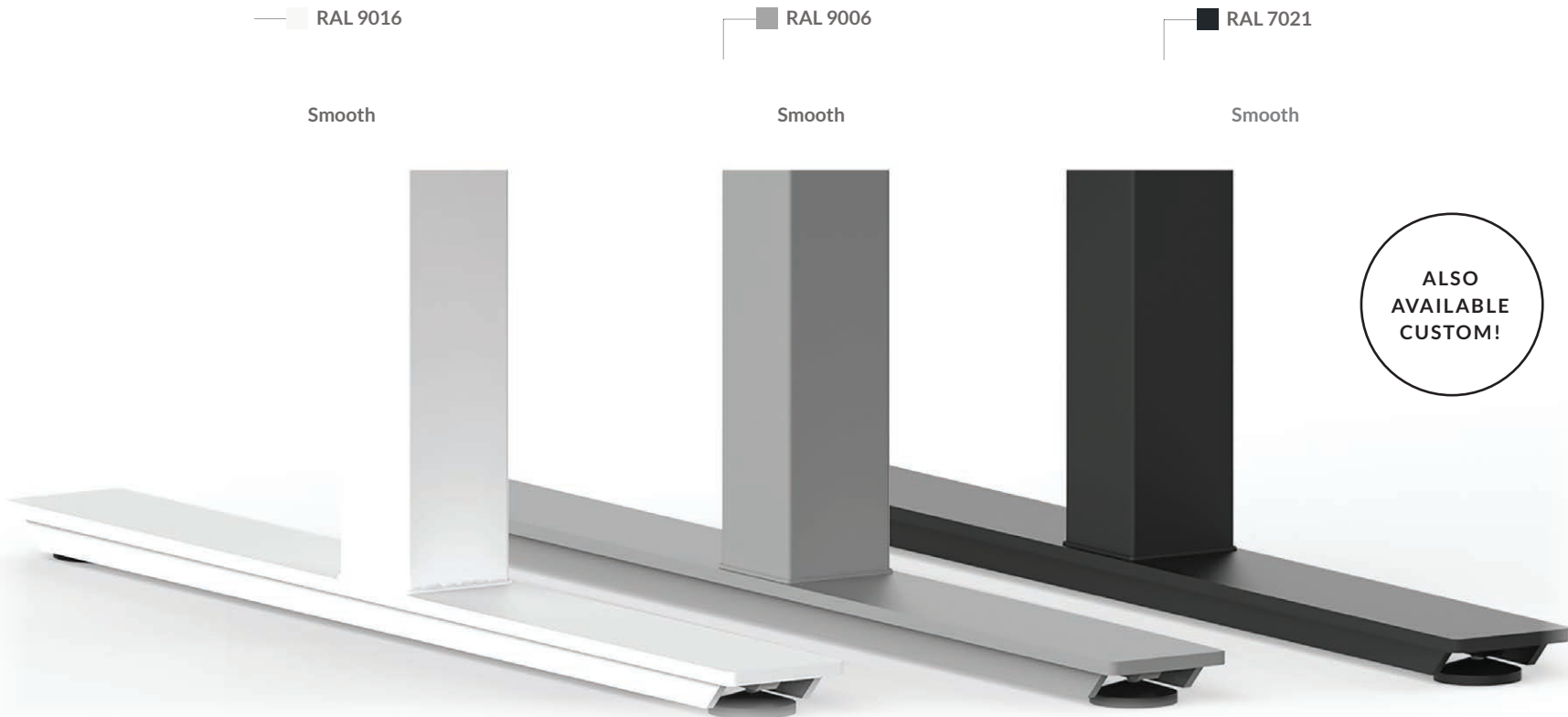
# Accessories and Options

FROM REMOTE CONTROLS TO CUSTOMIZATION



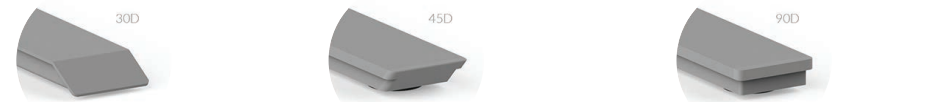
# Base Frame Options

ZGO offers 3 standard frame options in a smooth surface (white, grey, and black). For other frame options, please contact one of our sales offices.



# FEET STYLE OPTIONS

CUSTOMIZE YOUR FRAME'S FEET WITH THE OPTIONS SHOWN HERE

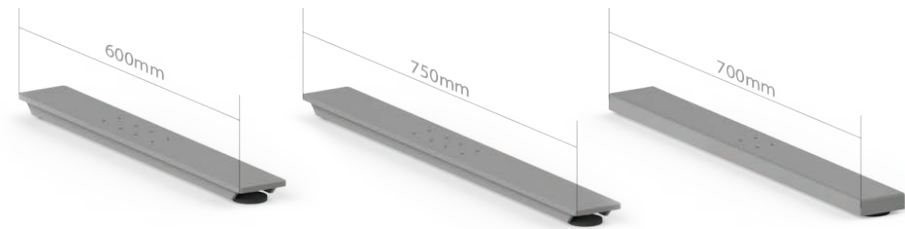


- Steel feet bending at 30 degree
- Aluminum feet cutting at 45 degree
- Aluminum feet cutting at 90 degree



- Solid steel feet
- Basic steel feet at 90 degree

## FEET LENGTH



- Basic steel feet only available for 700mm
- Choose the appropriate feet length according to your table top size

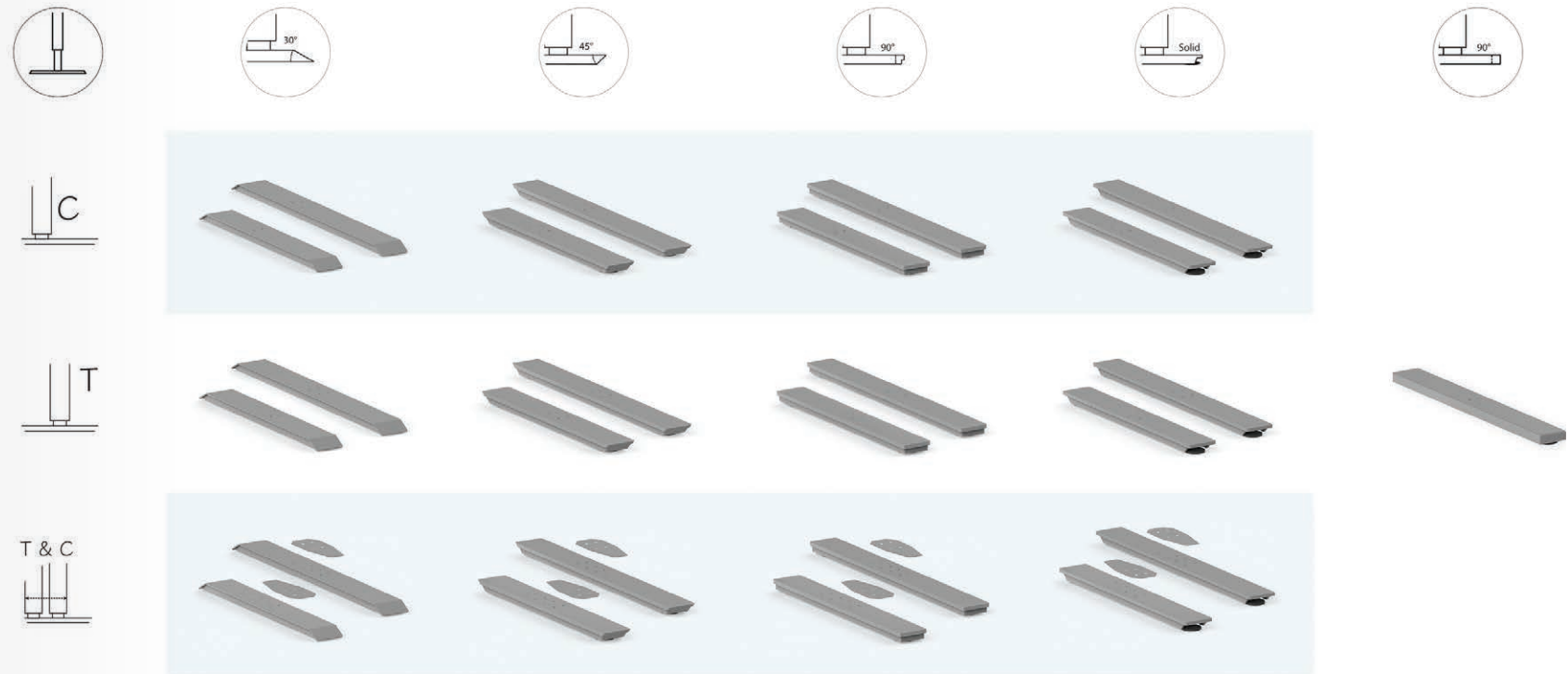


Harbor Freestanding 2 Leg with adjustable white frame

## SMART FEET OPTIONS



## STANDARD FEET OPTIONS

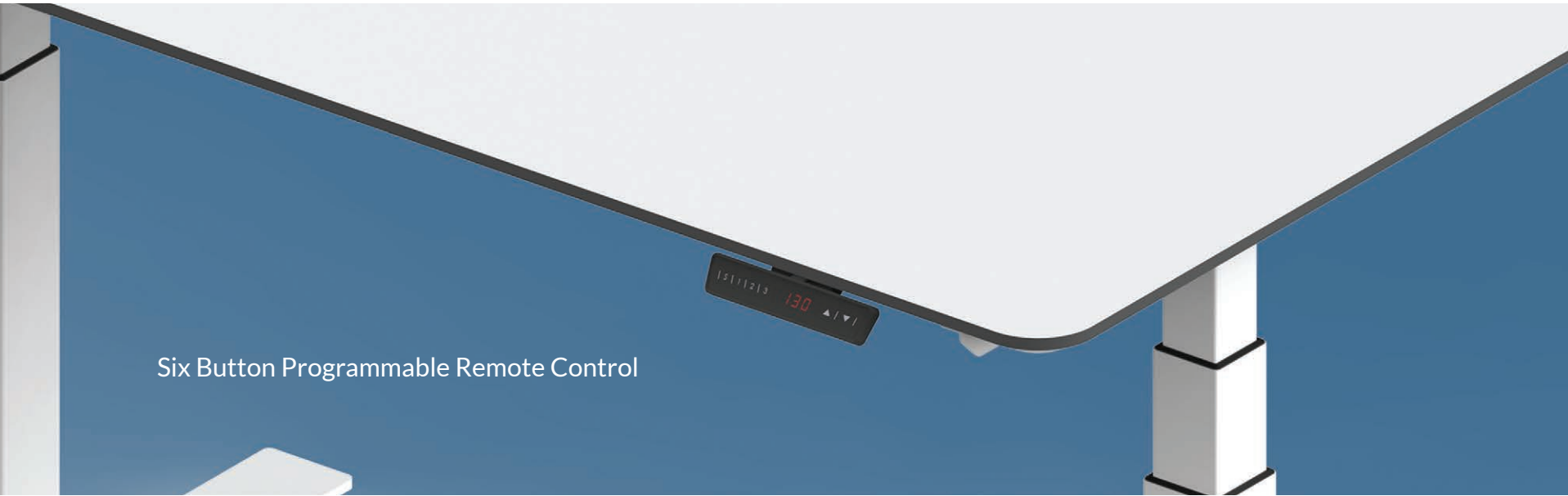


# Choose The Best Remote Control Options For Your Frame.

ZGO offers a variety of remote controls in different designs. Features range from simple to advanced, including optional programming of upper limit (shelf stop) and lower

limit (container stop). Define your requirement, choose your design, and soon you will be moving further with your new ZGO table.

LED Color Options // Flat Two Button // Angle Two Button // Two Button without Display // Six Button Programmable



Six Button Programmable Remote Control

## REMOTE CONTROL PAD OPTIONS

BLUETOOTH OPTIONAL

Two Button Touch Screen



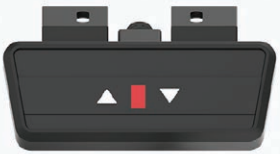
Five Button Touch Screen



Angle/Flat Two Button



Two Button without Display



Six Button Programmable



# Accessories

Add the finishing touches to enhance the work experience for your team.



2020 PRODUCT OFFERING

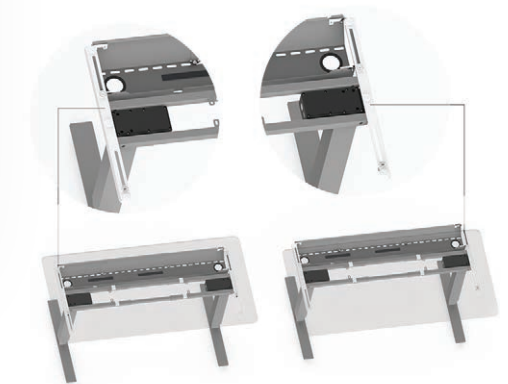
## CABLE TRAY

Easily gather equipment wires, chargers and power strips and keep them out of sight. Choose the suitable Cable Tray according to your tabletop size



## TOP SLIDE

Great match with cable tray. Easy access when using the slide system



## ENERGY CHAIN

Easily gather wires and keep them in order



## CONTROL UNITS

### ZGO CONTROL UNIT M1, M2, AND M3

- For 1, 2, & 3 motor systems (M1 = 1 motor, M2 = 2 motors, M3 = 3 motors)
- All in one output power from 110 to 240V, usable in any region based on selected power supply cord
- Energy savings during non-use
- Low standby power consumption: 0.1w
- 1 motor at 150w; 2 motors at 300w; 3 motors at 420w output power
- Compatible with all ZGO remotes
- Reaction time: 65 microseconds
- Frame height display in cm or inch
- Obstruction response with sensitivity range options
- Up to 3 memory positions
- Factory reset options
- Range of movement settings (container-stop/shelf-stop positions)
- Cascading: Connect up to 16 ZGO Control Units
- Auto run: An automated adjustment cycle to test product
- Handset lock: Lock the remote control to avoid accidental adjustment



2020 PRODUCT OFFERING

### LOGICDATA COMPACT E2 AND E3

- For 2 & 3 motor systems (E2 = 2 motors, E3 = 3 motors)
- Separate control units available with US and EU power output voltage
- Energy savings during non-use
- Low standby power consumption: 0.3w (0.1w available for EU version)
- 2 motors at 288w; 3 motors at 360w output power
- Compatible with all ZGO remotes except LED display
- Reaction time: 50 milliseconds
- Frame height display in cm or inch
- ISP (Intelligent System Protection)
- Up to 6 memory positions
- Factory reset options
- Range of movement settings (container-stop/shelf-stop positions)
- Cascading: Connect up to 4 COMPACT Control Units



### LOGICDATA SMART E1 AND E2

- For 1 & 2 motor systems (E1 = 1 motor, E2 = 2 motors)
- Separate control units available with US and EU power output voltage
- Energy savings during non-use
- Low standby power consumption: 0.3w (0.1w available for EU version)
- 1 motor at 128w; 2 motors at 216w output power
- Compatible with all ZGO remotes except LED display
- Reaction time: 50 milliseconds
- Frame height display in cm or inch
- ISP (Intelligent System Protection)
- Up to 6 memory positions
- Factory reset options
- Range of movement settings (container-stop/shelf-stop positions)



WWW.ZGOSOLUTIONS.COM



One world. One life. One body.



Contact us today to learn more about  
our products and find out how we can move you further.  
Visit our website at [www.zgosolutions.com](http://www.zgosolutions.com) or contact one  
of our sales offices to learn more.

**ASIA PACIFIC**

No. 909 Xinsongjiang Road  
13A Floor Fengyuan Building  
201620 Songjiang, Shanghai  
P.R.C.China  
Phone: +86 021 5778 6203

**NORTH & SOUTH AMERICA**

820 Monroe Avenue NW  
Suite 160  
Grand Rapids, Michigan 49503  
Phone: +01 616 499 7995  
Fax: +01 616 499 7856

**EUROPE**

Formervangen 18  
2600 Glostrup, Denmark  
Phone: +45 31 11 00 11